

BOSTON 2026 WORLD STAMP SHOW, INC.

MAY 23-30, 2026

BOSTON CONVENTION & EXHIBITION CENTER - EXHIBIT HALLS A-B
BOSTON, MASSACHUSETTS

Event

World Stamp Expo
May 23-30, 2026

Facility

BCEC
415 Summer Street
Boston, MA 02210
Hall: Halls A-B

Notes

| Dimension | Qty |
|-----------|-----|
| 10'x10' | 73 |
| 10'x15' | 47 |
| 10'x20' | 8 |
| 10'x30' | 8 |
| 15'x20' | 1 |
| 20'x20' | 8 |
| 20'x30' | 7 |
| 20'x65' | 1 |

Totals: 153

Aisle Width 10' unless noted

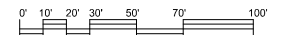
Ceiling Height 35'

□ □ = Electrical Access

● ● = Column

*FLOOR PLAN IS SUBJECT TO CHANGE AND FIRE MARSHALL APPROVAL.
DISCLAIMER: EVERY EFFORT HAS BEEN MADE TO ENSURE THE ACCURACY OF ALL INFORMATION CONTAINED ON THIS DRAWING, HOWEVER NO WARRANTIES, EITHER EXPRESSED OR IMPLIED, ARE MADE WITH RESPECT TO THIS DRAWING. IF THE LOCATION OF BUILDING COLUMNS, UTILITIES OR OTHER ARCHITECTURAL COMPONENTS OF THE FACILITY IS A CONSIDERATION IN THE CONSTRUCTION OR USAGE OF AN EXHIBIT, IT IS THE SOLE RESPONSIBILITY OF THE EXHIBITOR TO VERIFY ALL DIMENSIONS AND LOCATIONS.

Scale



HERITAGE

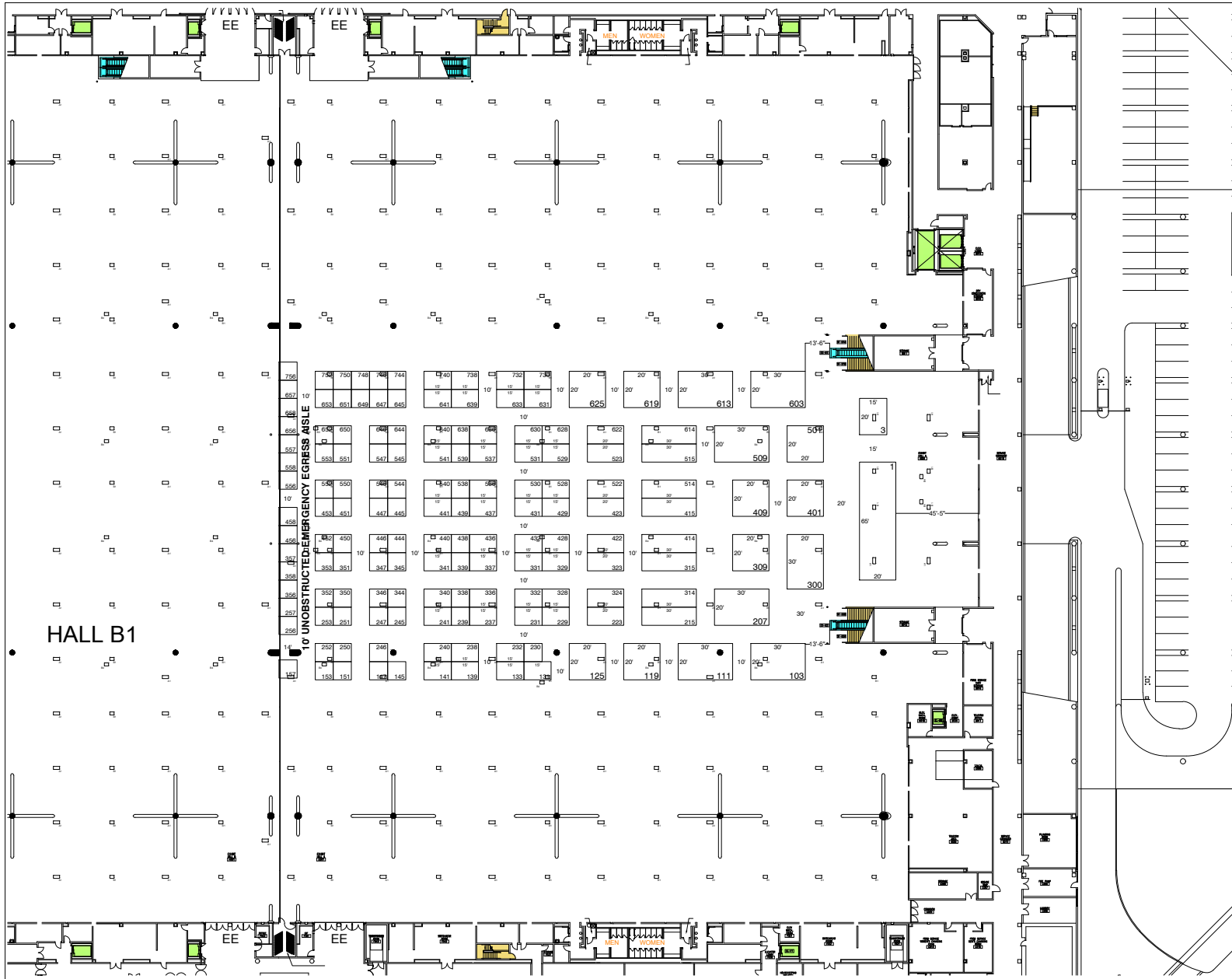
620 Shenandoah Ave. St. Louis, MO 63104
Phone (314) 534-8500 Fax (314) 533-0906

Sales Exec: Mike Adams

Job Number: 624618

Drawing Created: Aug 15, 2022 - 8:17am
Toby.rose - F:\current show\2026 Shows\World Stamp Show
Boston 05 26\FP\CAD FP\WSE2026_05.dwg

COPYRIGHT 2022 HERITAGE EXPOSITION SERVICES, INC.
ALL RIGHTS RESERVED



HALL B1